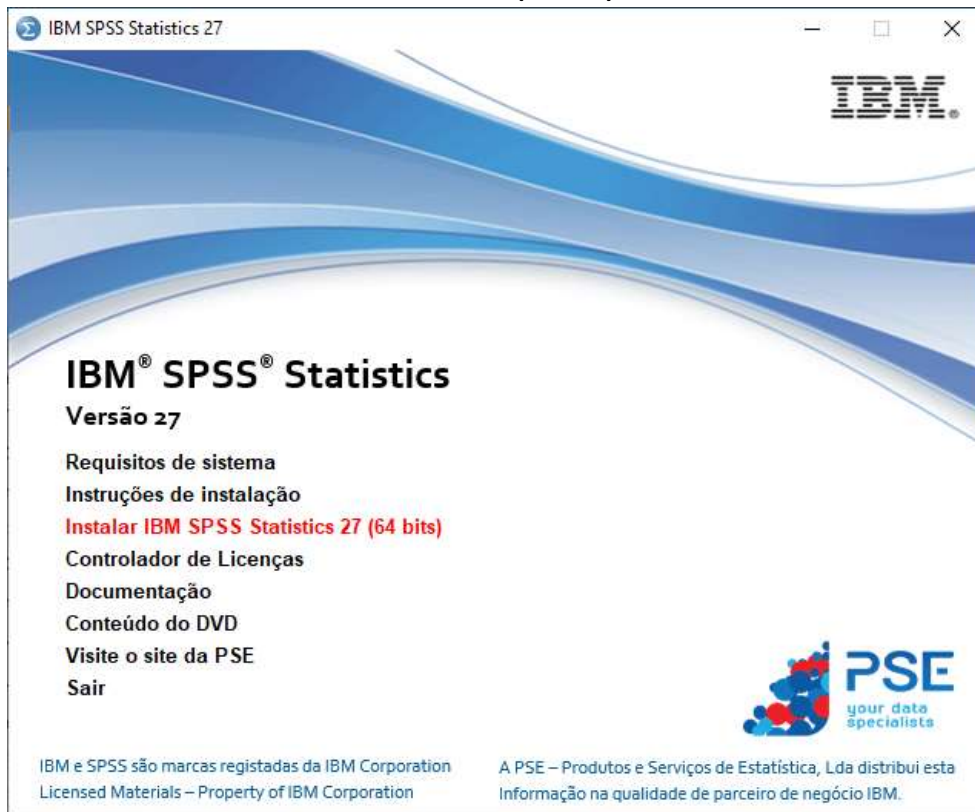
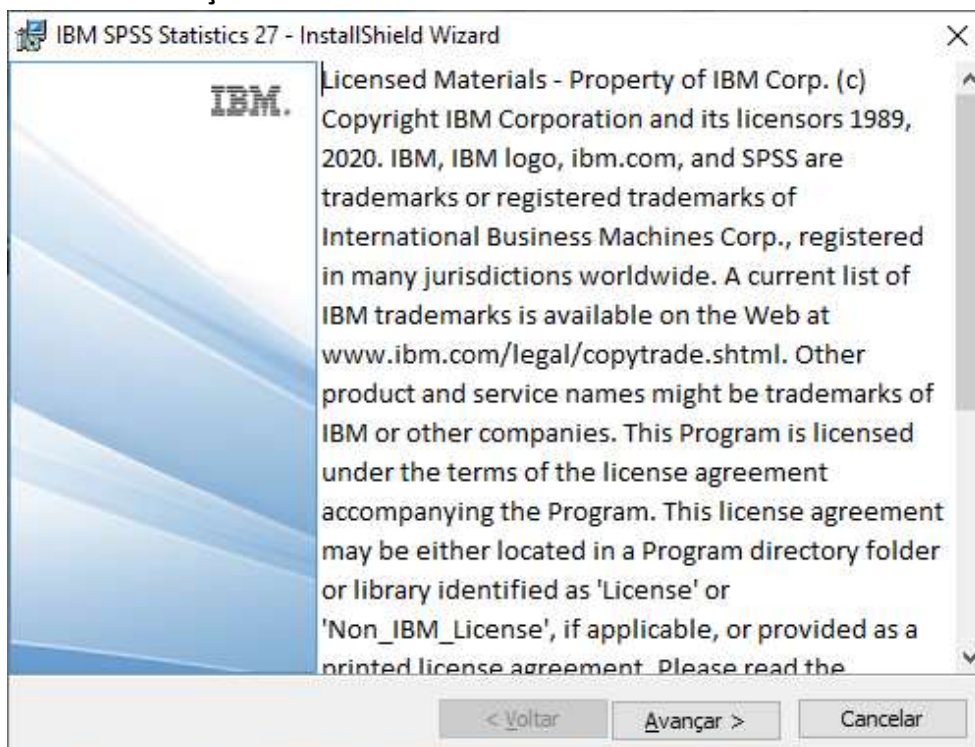


## Instalação do IBM SPSS Statistics - Versão 27 Windows

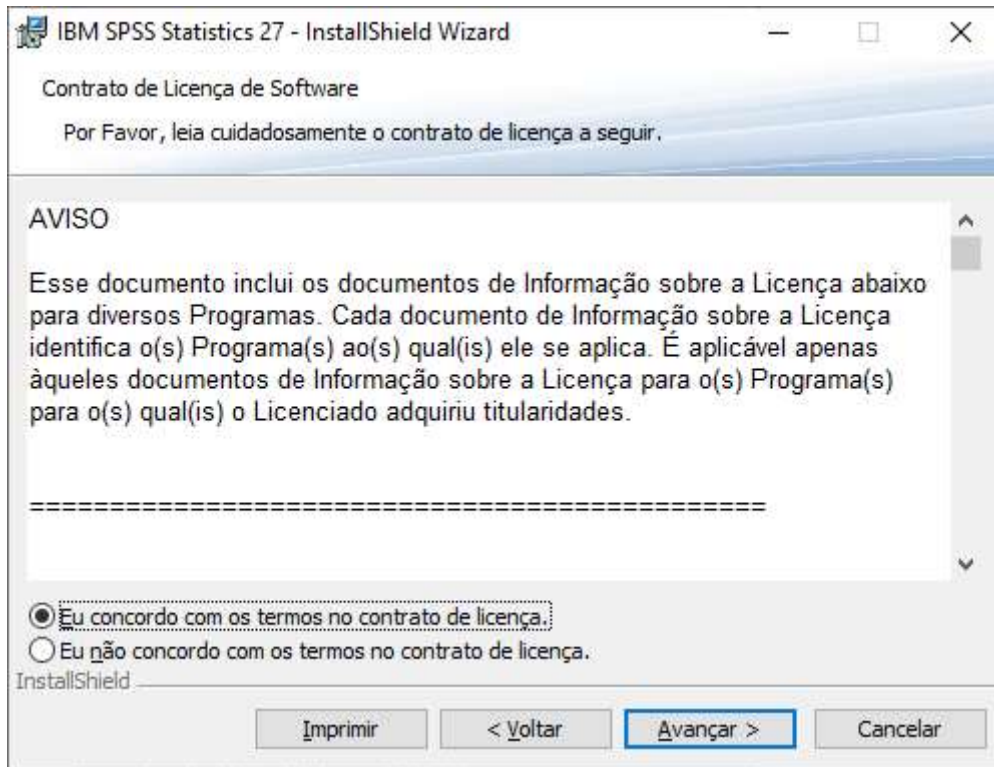
1. **Descompactar** e **Executar** ficheiro de instalação (setup.exe)
2. Escolher **Instalar IBM SPSS Statistics 24 (64 bits)**



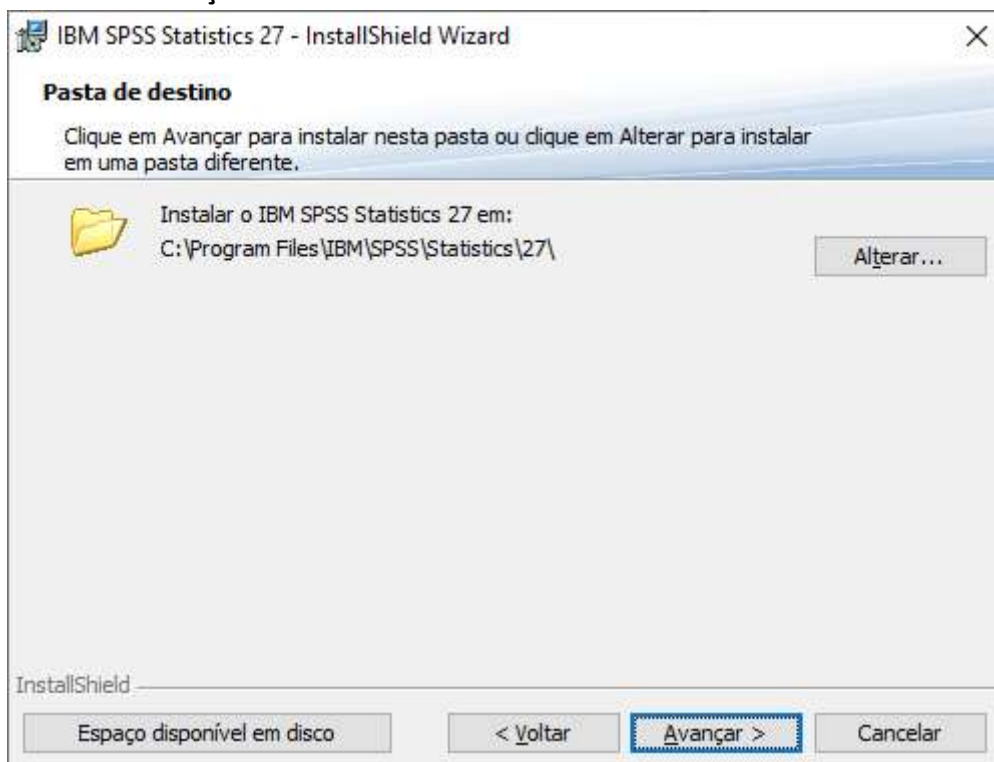
3. Escolher **Avançar**



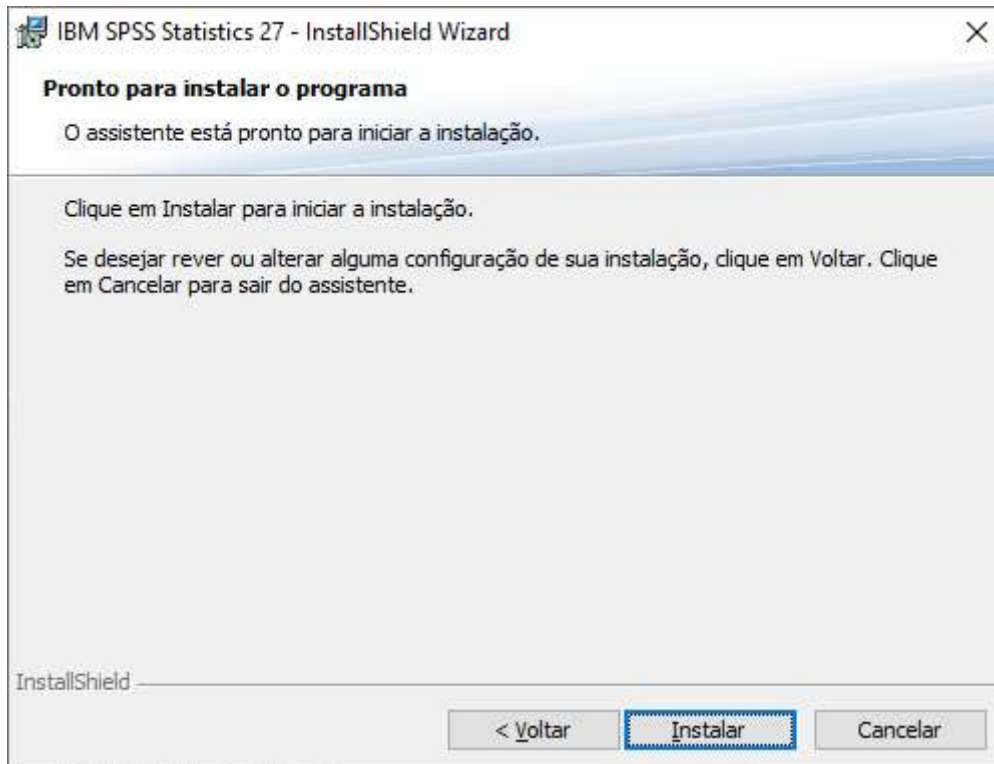
#### 4. Marcar a caixa **Eu concordo com os termos ...** e clique em **Avançar**



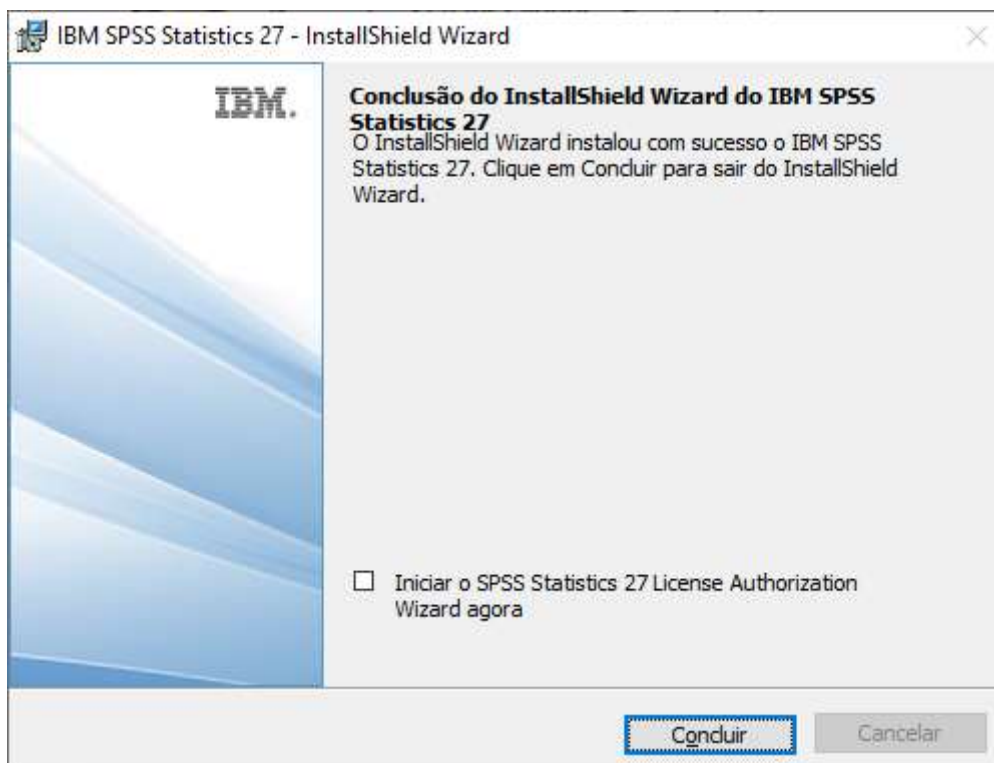
#### 5. Escolher **Avançar**



## 6. Escolher **Instalar**



## 7. Desmarcar a opção **Iniciar o SPSS Statistics 27 License Authorization Wizard agora** e escolher **Concluir**



A instalação fica assim concluída.

**NOTA:** Posteriormente deverá aceder ao portal do estudante, no separador TIC e preencher o formulário a solicitar a Licença.